

# Achieving Cyber Resilience: Aligning Mimecast with the UK CAF

The NCSC Cyber Assessment Framework (CAF) provides a systematic approach for organisations to assess their cyber resilience. Mimecast maps its security capabilities directly across the CAF's 14 principles to ensure essential services remain operational and secure.

## A. Managing Security Risk



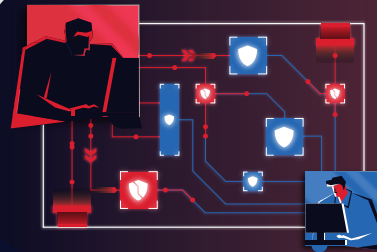
Establishing robust governance and a dynamic understanding of organizational and human centric risks.

### Mimecast Solutions

- Human Risk Command Centre
- Aware
- Engage
- Mihra AI

### Mimecast Solutions

- Advanced Email Security
- Incydr
- DMARC Analyzer
- Collaboration Threat Protection



## B. Protecting Against Cyber Attack

Implementing proactive controls to secure data, systems, and people across email and collaboration tools.

## C & D: Detect and Minimise Impact

Proactively hunting threats and ensuring rapid recovery to maintain essential service availability.



### Mimecast Solutions

- Cloud Archive
- AI-Assisted Investigation
- SIEM, SOAR & XDR Integrations

### 80% of incidents caused by 8% of users

Mimecast focuses intervention where human risk is highest through individualised risk scoring.

### 7 Billion daily interactions analysed

Detection engines are continuously refined by massive datasets across email and collaboration platforms.

### 100% Availability SLA

Geographically dispersed infrastructure ensures uninterrupted communication even during a cyber outage or incident.

**mimecast**

**HUMAN RISK, SECURED.**

[LEARN MORE](#)